



EMBA GARDEN VILLAS

An architectural rendering of a modern, two-story villa. The building features a light-colored facade and large windows with light-colored curtains. A balcony with a glass railing and vertical wooden slats is visible on the upper floor. The ground floor has a large window and a small entrance area. The villa is surrounded by a landscaped garden with green grass, small trees, and tall, thin cypress trees. The sky is a clear, light blue.

Introduction

The project is located in a quiet residential area with complete supporting facilities and complete surrounding schools, hospitals, supermarkets and shopping malls.

It is located in the most popular residential area, with a high population level of surrounding residents and high quality of humanities and natural environment.

The entire project consists of 4 villas with quiet and spacious outdoor areas.



Town hall : 5 mins



beach: 1 min



Private school : 1 min



Public school : 3 mins



supermarket: 1 min



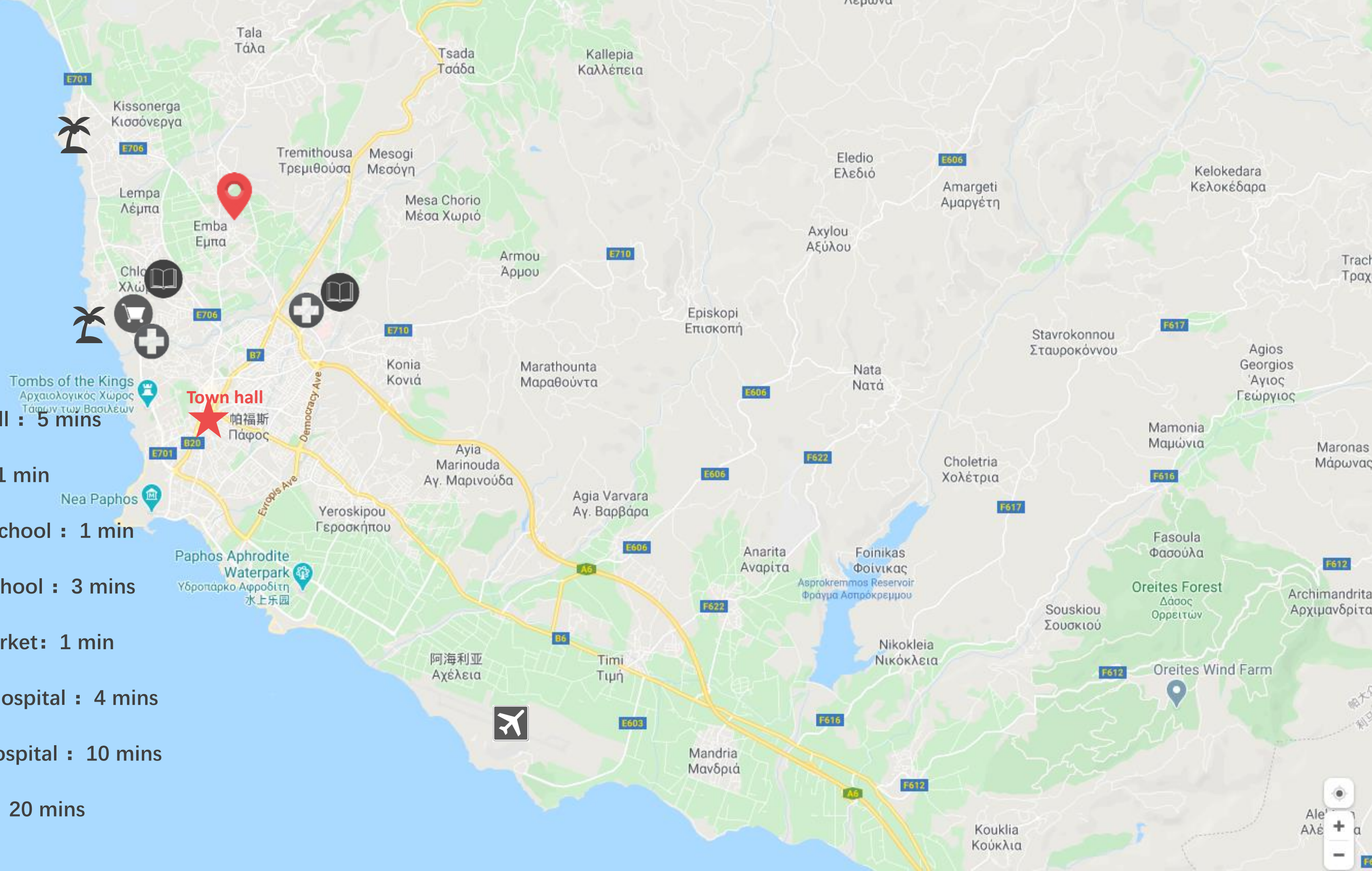
Private hospital : 4 mins



Public hospital : 10 mins



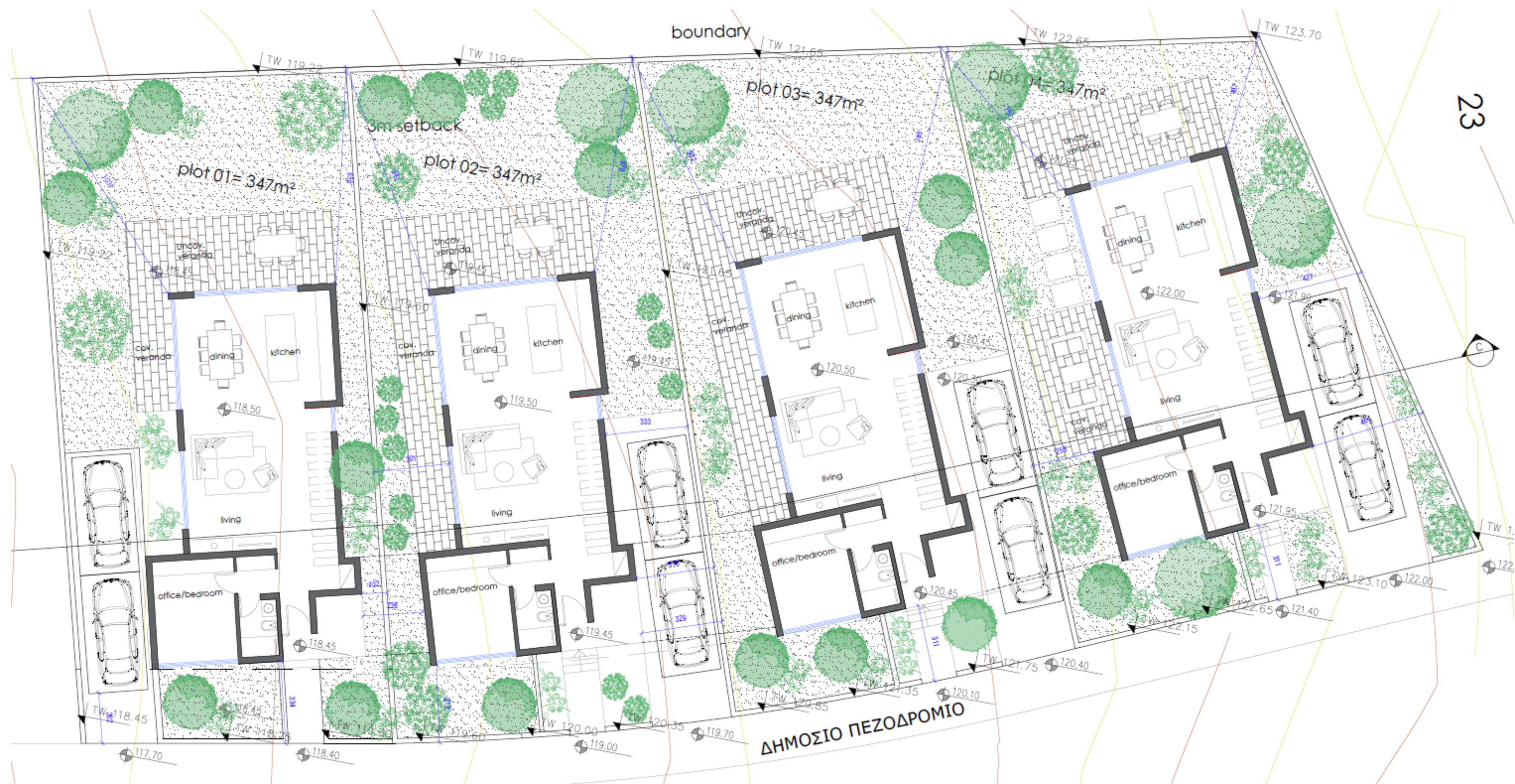
airport : 20 mins







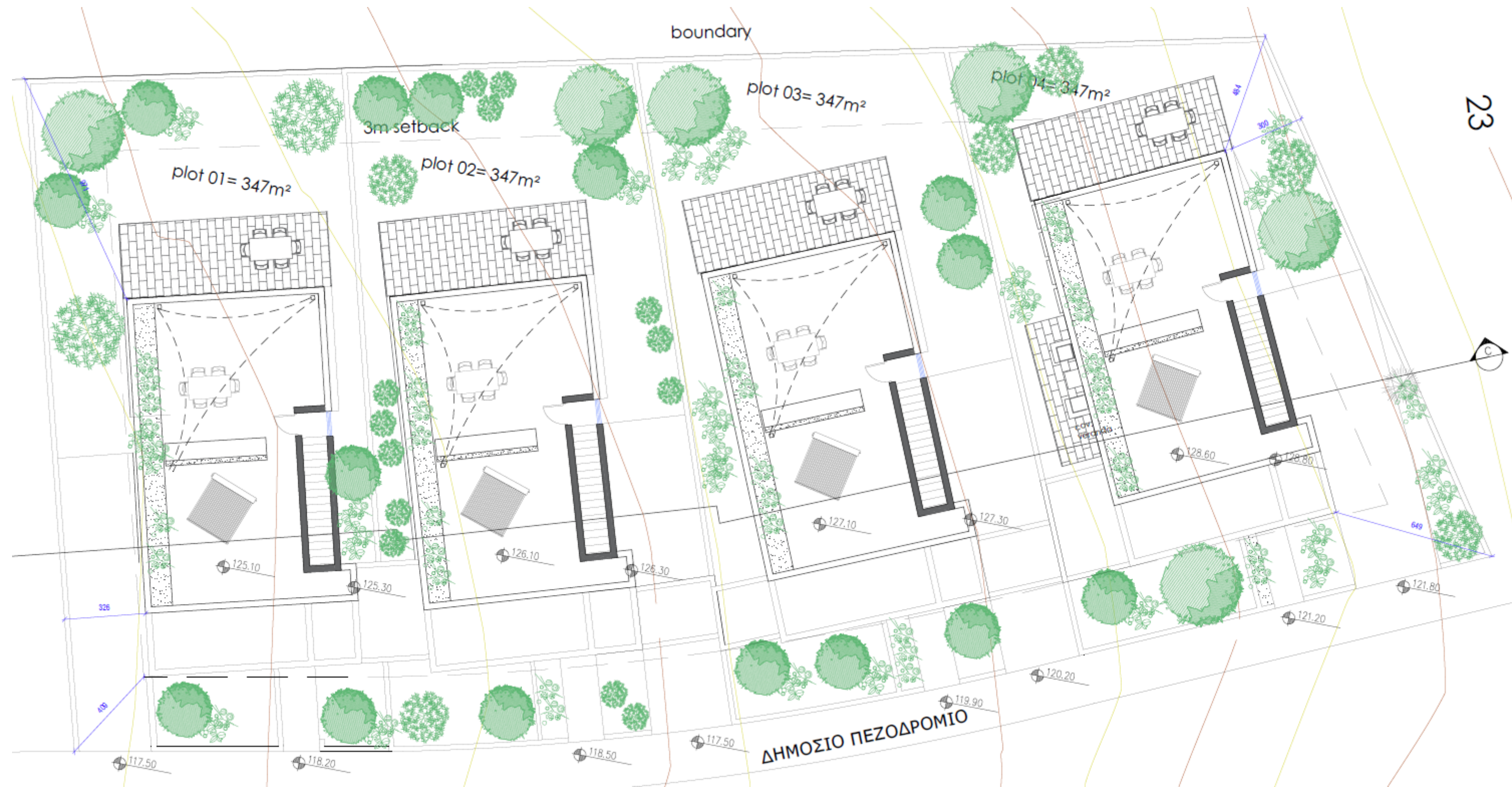
No	Bedrooms	wc	Covered area m ²	Covered Veranda m ²	Roof Garden m ²	Total area m ²	Plot size m ²
V1	4	4	179	33	40	252	347
V2	4	4	179	33	40	252	347
V3	4	4	179	33	40	252	347
V4	4	4	179	33	40	252	347



Ground Floor



First Floor



Roof Garden